

For Each Block:

Sew (4) Unit 2 sections around the center D.
Press.

Repeat to make (25) blocks.
Each block measures 12-1/2" x 12-1/2".

2. Sew blocks in five rows of five blocks each, referring to quilt picture.
Press seams.

3. Sew rows together.
Quilt should measure 60-1/2" x 60-1/2".

4. Sew borders to quilt edge, leaving at least 6" on each end for mitering.

5. Miter corners of borders and trim excess.

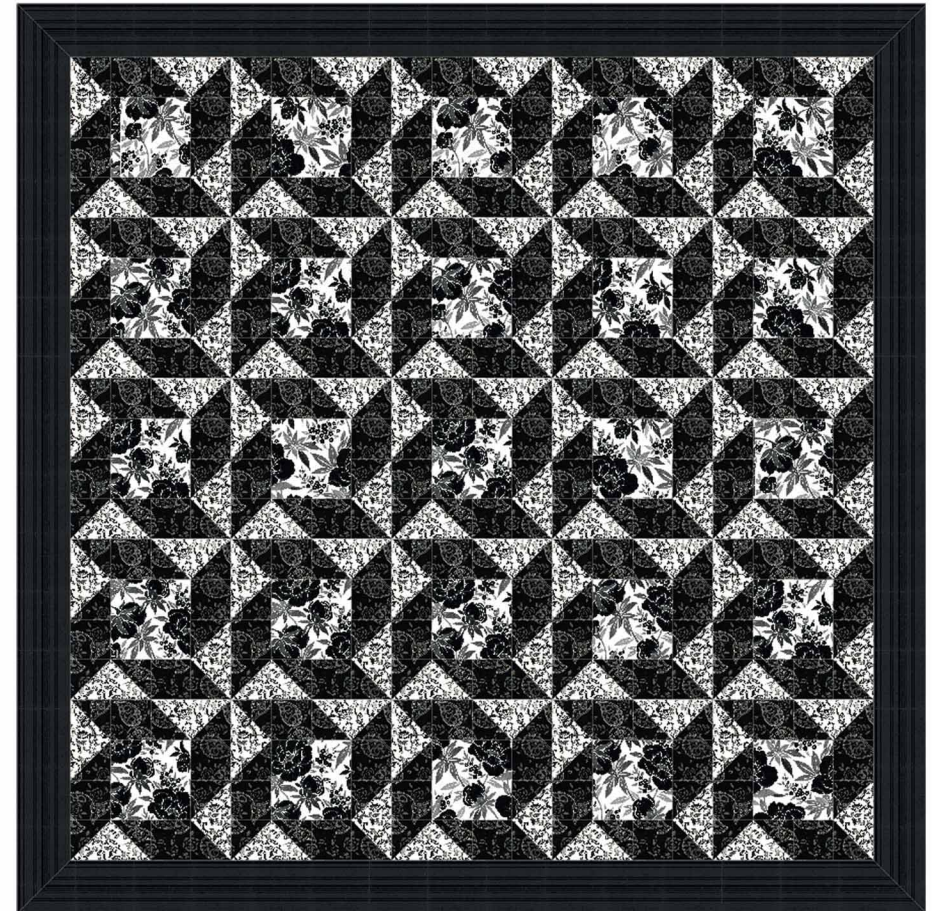
Finishing:

Quilt as desired and bind.

Have Fun!!!

Midnight Elegance

Designed by Erin Witt



Featuring Fabric from the
Elegance II Collection designed by Rosemarie Lavin

Be sure to visit www.windhamfabrics.com to see the complete collection and to download this and other free projects

 *Windham Fabrics*

812 Jersey Ave ~ Jersey City, NJ 07310 ~ 201.659.0444 ~ FAX: 201.659.9719 ~ info@baumtextile.com

 *Windham Fabrics*
a division of Baum Textile Mills

Midnight Elegance

designed by Erin Witt

Fabric from the Elegance II Collection by Rosemarie Lavin

Level: Beginner

Quilt finished Size: 68" x 68"

Block Size: 12" finished / Number of Blocks: 25

Fabric Requirements:

2-1/2 yd SKU # 29097-1 black paisley
1-1/8 yd SKU # 29100-2 large black and white floral
1-1/4 yd SKU # 29098-2 black and white print
2-1/8 yd SKU # 29102-1 black stripe

Cutting Directions:

SKU # 29097-1 black paisley - blocks

A's. Cut (10) 4" strips across width of fabric (wof).
Cut (100) 4" x 4" squares from these strips.
Cut each square once diagonally to make (200) triangles.

B's. Cut (10) 3-1/2" strips across wof.
Cut (100) 3-1/2" x 3-1/2" squares from these strips.

SKU # 29100-2 large black and white floral - blocks

D's. Cut (5) 6-1/2" strips across wof.
Cut (25) 6-1/2" squares from these strips.

SKU # 29098-2 black and white print - blocks

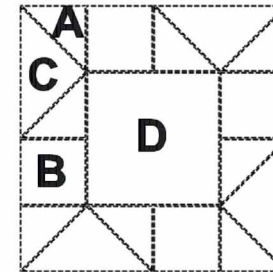
C's. Cut (5) 7-1/2" strips across wof.
Cut (25) 7-1/2" x 7-1/2" squares from these strips.
Cut each square twice diagonally to make (100) triangles.

SKU # 29102-1 black stripe - border, binding

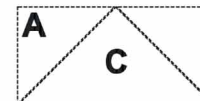
Fussing cut (4) 4-1/2" strips length of fabric for border
Cut (4) 2-1/2" strips. Piece, as needed, to make approximately 280" of binding.

Assembly:

1. Make 25 blocks, as shown below.



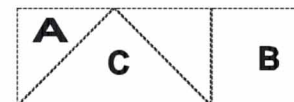
Unit 1 Sew (1) A to each side of C, as shown in Unit 1 Diagram.
Repeat to make (100) units - (4) per block.
Press and trim each unit to 3-1/2" x 6-1/2".



UNIT 1

units

Unit 2 Sew (1) B to right side of each Unit 1, as shown in Unit 2 diagram.
Repeat to make (100) units - (4) per block.
Each unit should measure 3-1/2" x 9-1/2".



UNIT 2