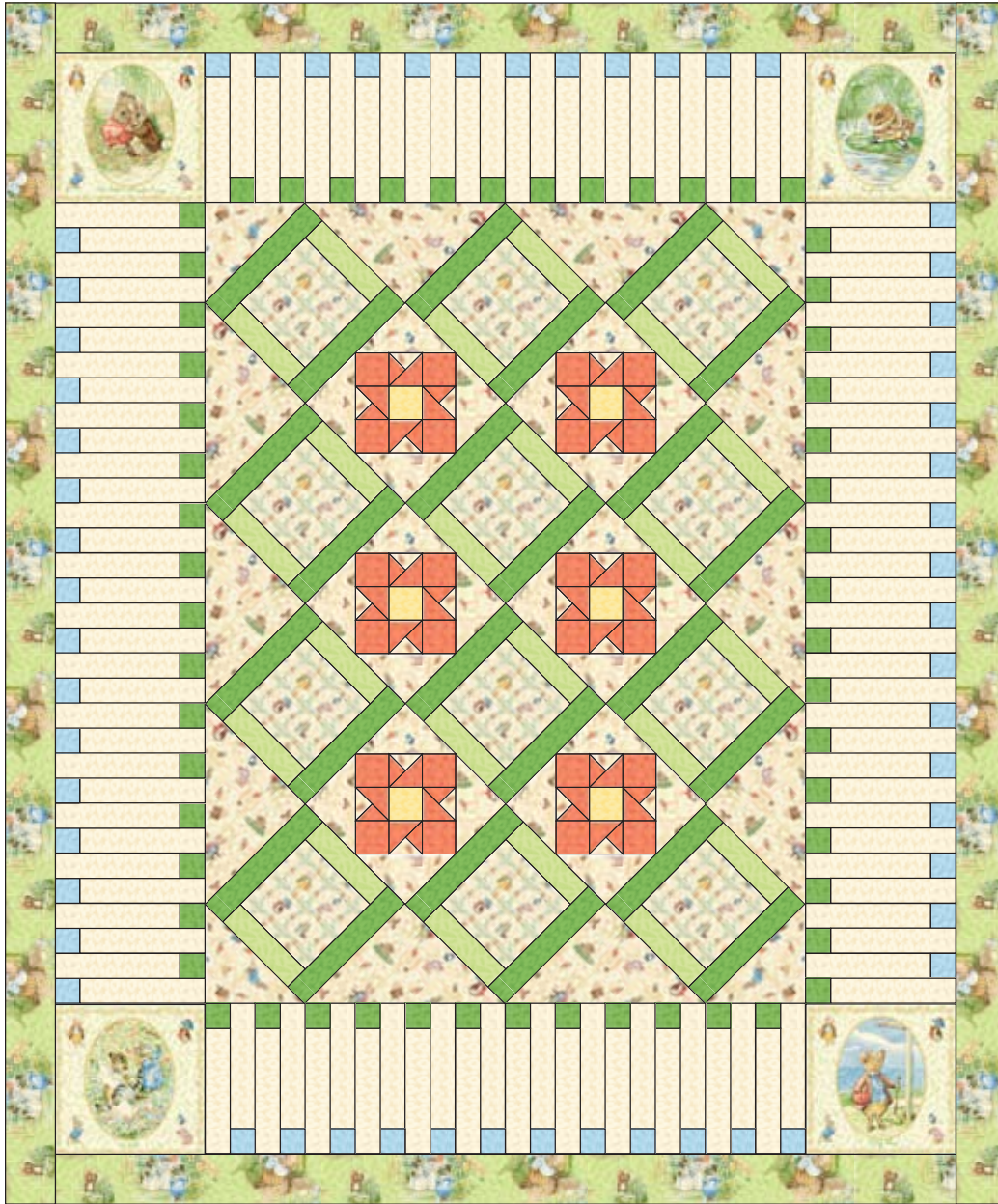


# Victorian Nursery



Finished size ~ 60" x 72"



20355\_E Panels  
4 panels



20358\_E Character print  
1/2 yd



20359\_B Blue fern  
1/4 yd



20361\_G Green floral  
3/4 yd



20356\_E Character print  
1-1/4 yds



20359\_H Green fern  
3/4 yd



20361\_E Cream floral  
1-1/2 yds



20361\_S Yellow floral  
1/8 yd



20372\_H Green Print  
1 yd



20361\_T Pink floral  
1/2 yd

Designed by Allison Utech  
Skill Level: Advanced Beginner

### Cutting

+ Cutting dimensions followed by a "+" are to be cut  $\frac{1}{16}$ " larger than number listed. For instance, 4"+ would be  $4\frac{1}{16}$ ".

#### 20361\_S Yellow Floral Print

1 -  $2\frac{1}{2}$ " strip, from strip cut 6 -  $2\frac{1}{2}$ " squares

#### 20361\_T Pink Floral Print

2 -  $2\frac{1}{2}$ " strips, from strips cut 24 -  $2\frac{1}{2}$ " squares

1 - 4"+ strip, from strip cut 6 - 4"+ squares, cut squares in quarters diagonally

1 -  $3\frac{3}{4}$ " strip, from strip cut 6 -  $3\frac{3}{4}$ " squares, cut squares in quarters diagonally

#### 20356\_E Large Cream Character Print

1 -  $3\frac{3}{4}$ " strip, from strip cut 6 -  $3\frac{3}{4}$ " squares, cut squares quarters diagonally

2 -  $7\frac{1}{4}$ " strip, from strip cut 6 -  $7\frac{1}{4}$ " squares, cut squares in quarters diagonally

2 -  $9\frac{3}{8}$ " strips, from strips cut 5 -  $9\frac{3}{8}$ " squares, cut squares in half diagonally

1 -  $9\frac{3}{4}$ " square, cut in quarters diagonally

#### 20358\_E Small Cream Character Print

2 - 6" strips, from strips cut 12 - 6" squares

#### 20359\_H Light Green Fern Print

4 - 2" strips, from strips cut 24 - 2" x 6" rectangles

7 -  $2\frac{1}{4}$ " wide strips, join together to make binding

#### 20361\_G Dark Green Floral Print

6 - 2" strips, from strips cut 24 - 2" x 9" rectangles

3 - 2" strips, from strips cut 56 - 2" squares

#### 20359\_B Blue Fern Print

3 - 2" strips, from strips cut 56 - 2" squares

#### 20361\_E Cream Floral Print

23 - 2" strips, from strips cut 112 - 2" x 8" rectangles

#### 20355\_E Panels

4 -  $9\frac{1}{2}$ " squares, centered around panels

#### 20372\_H Green Scenic Print

8 -  $3\frac{1}{2}$ " wide strips; join strips and cut:

2 -  $3\frac{1}{2}$ " x  $54\frac{1}{2}$ " border strips

2 -  $3\frac{1}{2}$ " x  $72\frac{1}{2}$ " border strips

### Sewing

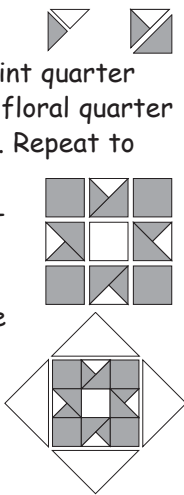
Use standard  $\frac{1}{4}$ " seam allowance throughout.

#### Flower Blocks

1. Sew 1 -  $3\frac{3}{4}$ " pink floral quarter square triangle to 1 -  $3\frac{3}{4}$ " cream character print quarter square triangle. Then sew 1 -  $4\frac{3}{4}$ " pink floral quarter square to the long side of triangle unit. Repeat to make 24 triangle units.

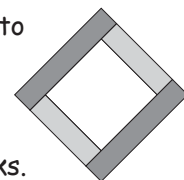
2. Arrange 4 completed triangle units, 4 -  $2\frac{1}{2}$ " pink floral squares, and 1 -  $2\frac{1}{2}$ " yellow floral square as shown. Sew together in rows, join rows to complete block. Repeat to make 6 flower blocks.

3. Sew 1 -  $7\frac{1}{4}$ " cream character print quarter square to each side of the flower block. Repeat with all 6 blocks.



### Lattice Blocks

1. Sew 2 - 2" x 6" light green rectangles to opposite sides of 1 - 6" cream print square. Sew 2 - 2" x 9" dark green print rectangles to remaining sides of square. Repeat to make 12 lattice blocks.

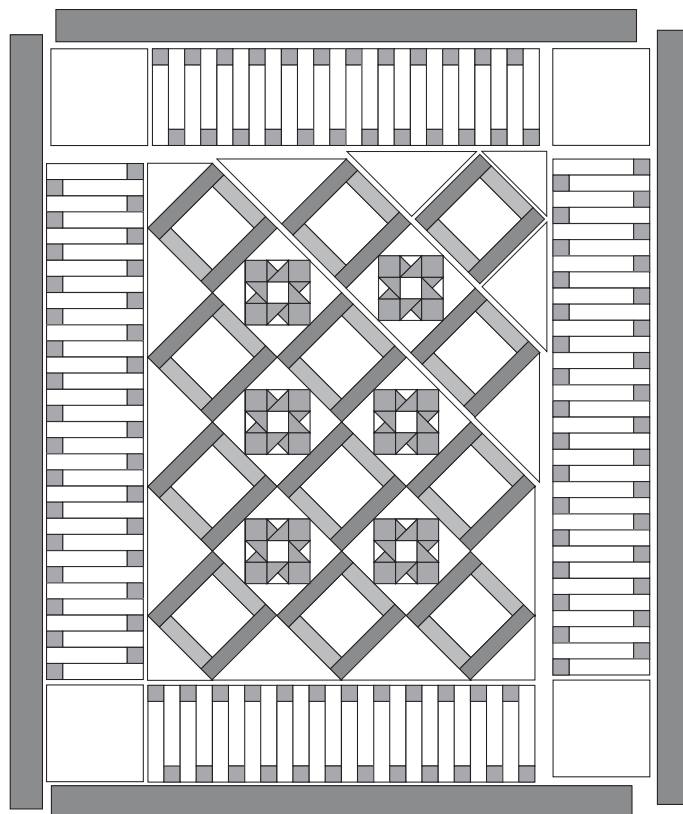


### Assemble the Quilt Center

1. Lay out 12 lattice blocks, 6 flower blocks, 10 -  $9\frac{3}{8}$ " cream half square triangles, and 4 -  $9\frac{3}{4}$ " cream quarter square triangles as shown below. Join blocks in diagonal rows, join rows to complete quilt center.

### Borders

1. Sew 1 - 2" blue print square to the short end of 1 - 2" x 8" cream floral print rectangle. Repeat to make 56 blue fence units. In the same manner, sew 1 - 2" green print square to the short end of 1 - 2" x 8" cream floral print rectangle. Repeat to make 56 green fence units.
2. Sew 24 fence units side by side, alternating between blue and green units to make the top fence border; repeat for bottom border. In the same manner, sew together 32 fence units for each of the side borders.
3. Sew side fence borders to both sides of quilt center. Sew 1 - 9 1/2 panel square to each end of the top and bottom borders. Attach top and bottom borders to quilt center.
4. Sew  $54\frac{1}{2}$ " green border strips to top and bottom of quilt. Sew  $72\frac{1}{2}$ " green border strips to sides of quilt.
5. Layer, quilt, and bind.



While all possible care has been taken to ensure the accuracy of this pattern, we are not responsible for printing errors or the way in which individual work varies.

www.QuiltingTreasures.com

Spring 07/Not for resale



BEATRIX POTTER™ © Frederick Warne & Co. 2006  
Frederick Warne & Co. is the owner of all copyrights and trademarks in the Beatrix Potter characters names and illustrations  
Licensed by © Copyrights Group  
Visit the Peter Rabbit website at: www.peterrabbit.com