

Introducing Gail Kessler's newest collection with Andover Fabrics

Kazoo Strings



*Kazoo Strings quilt by Jan Douglas
Kazoo Strings quilted by Barbara Persing
Kazoo Strings fabrics by Gail Kessler
Finished size approx: 45" x 45"*



makower uk[®]

462 7th Ave · New York, NY 10018 · (800) 223-5678

www.andoverfabrics.com

- Free Pattern Download Available -

Kazoo Strings Quilt

Quilt by Jan Douglas • Quilted by Barbara Persing

Kazoo Strings Fabric designed by Gail Kessler for Andover Fabrics

Quilt finishes approx. 45" x 45"

Fabric Requirements:

| | | | | | |
|----------|-----------------------|---------|------------------------|---------|------------------------|
| 2905-B | Light Blue – 1/4 yd | 2905-G3 | Medium Green – 1/4 yd | 2905-O2 | Medium Orange – 1/4 yd |
| 2905-B3 | Medium Blue – 1/4 yd | 2905-G4 | Mixed Green – 1/4 yd | 2905-O3 | Mixed Orange – 1/4 yd |
| 2905-DB | Dark Blue – 1/2 yd | 2905-P | Medium Purple – 1/4 yd | 2905-R | Medium Red – 1/4 yd |
| 2905-T | Medium Teal – 1/4 yd | 2905-P2 | Mixed Purple – 1/4 yd | 2905-R2 | Dark Red – 1/8 yd |
| 2905-T2 | Light Teal – 1/4 yd | 2905-DP | Dark Purple – 1/4 yd | 2905-R3 | Mixed Red – 1/4 yd |
| 2905-YG2 | Yellow Green – 1/3 yd | 2905-Y | Medium Yellow – 1/4 yd | 2905-E | Dark Pink – 1/4 yd |
| 2905-G | Dark Green – 1/8 yd | 2905-Y3 | Light Yellow – 1/4 yd | 2905-E2 | Light Pink – 1/4 yd |
| 2905-G2 | Light Green – 1/8 yd | 2905-O | Light Orange – 1/4 yd | 2905-K | Black – 1/4 yd |
| | | | | 2905-LN | Beige – 2-1/2 yd |

Cutting Directions:

From 2905-B Light Blue and 2905-E2 Light Pink cut:

- Two 2" x 6-1/2" strips
- Two 2" x 5" strips
- Two 2" x 3-1/2" strips
- Two 3-1/2" x 3-1/2" squares
- One 3-1/2" x 9-1/2" rectangle

From 2905-B3 Medium Blue and 2905-P Medium Purple cut:

- Four 2" x 6-1/2" strips
- Four 2" x 5" strips
- Four 2" x 3-1/2" strips
- Four 3-1/2" x 3-1/2" squares

From 2905-DB Dark Blue cut:

- Two 2" x 6-1/2" strips
- Two 2" x 5" strips
- Two 2" x 3-1/2" strips
- One 3-1/2" x 3-1/2" squares
- Five 2" strips for quilt binding

From 2905-P2 Mixed Purple, 2905-T Medium Teal, and 2905-T2 Light Teal cut:

- Four 2" x 6-1/2" strips
- Four 2" x 5" strips
- Four 2" x 3-1/2" strips
- Two 3-1/2" x 3-1/2" squares

2905-R2 Dark Red cut:

- One 3-1/2" x 3-1/2" square

NOTE: Cut squares and rectangles first, from selvage edge of fabric. Then cut 2" strips to desired lengths from remaining fabric.

From 2905-YG2 Yellow Green cut:

- Six 2" x 6-1/2" strips
- Six 2" x 5" strips
- Six 2" x 3-1/2" strips
- Two 3-1/2" x 3-1/2" squares
- One 3-1/2" x 9-1/2" rectangle

From 2905-G2 Light Green, 2905-O Light Orange, 2905-R Medium Red, 2905-R3 Mixed Red and 2905-E Dark Pink cut:

- Two 2" x 6-1/2" strips
- Two 2" x 5" strips
- Two 2" x 3-1/2" strips
- Two 3-1/2" x 3-1/2" squares

2905-G3 Medium Green cut:

- Four 2" x 6-1/2" strips
- Four 2" x 5" strips
- Four 2" x 3-1/2" strips
- Two 3-1/2" x 3-1/2" squares

2905-G4 Mixed Green and 2905-DP Dark Purple cut:

- Four 2" x 6-1/2" strips
- Four 2" x 5" strips
- Four 2" x 3-1/2" strips
- Three 3-1/2" x 3-1/2" square

From 2905-G Dark Green cut:

- Two 2" x 6-1/2" strips
- Two 2" x 5" strips
- Two 2" x 3-1/2" strips

From 2905-Y Medium Yellow cut:

- Four 2" x 6-1/2" strips
- Four 2" x 5" strips
- Four 2" x 3-1/2" strips
- Two 3-1/2" x 3-1/2" squares
- One 3-1/2" x 9-1/2" rectangle

From 2905-Y3 Light Yellow and 2905-O2 Medium Orange cut:

- Four 2" x 6-1/2" strips
- Four 2" x 5" strips
- Four 2" x 3-1/2" strips
- One 3-1/2" x 3-1/2" square

From 2905-O3 Mixed Orange cut:

- Four 2" x 6-1/2" strips
- Four 2" x 5" strips
- Four 2" x 3-1/2" strips

From 2905-K Black cut:

- Two 2" x 36-1/2" strips
- Four 2" x 39-1/2" strips

From 2905-LN Beige (backing):

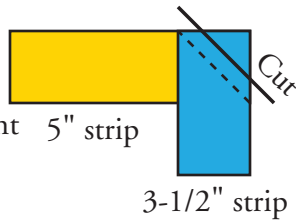
- Cut sections to fit finished quilt with 4" overlap on all sides.

Kazoo Strings Quilt

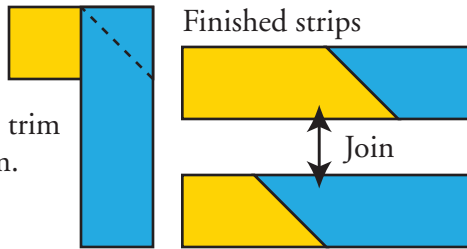
Sewing Directions:

Refer to diagram for correct fabric choices. To make all blocks, piece strips together as follows:

1. Using two different fabrics, and with right sides together, place 3-1/2" strip on top of right end of 5" strip. Sew diagonally across strips. Trim away excess fabric from corner, leaving 1/4" seam.

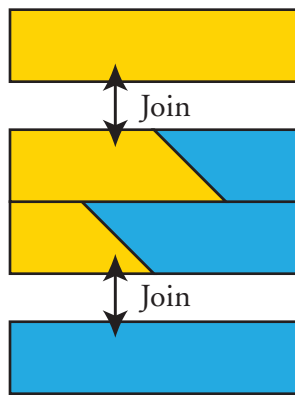


2. Repeat for second strip, reversing the placement of strip lengths.

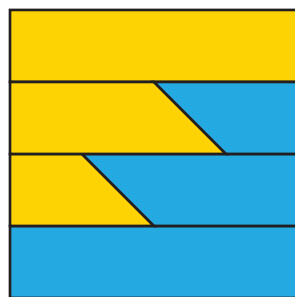


3. Sew these two strips together, and trim corner to 1/4" seam.

4. Sew 2" x 6-1/2" strips, one of each color, to ends of the two joined center strips, matching colors appropriately.

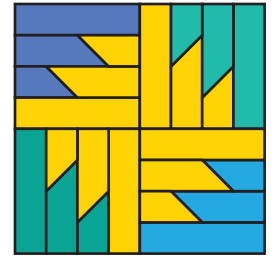


Completed block



Assembling the Quilt Top:

Sew blocks together in rows by alternating the blocks vertically and horizontally. The "puzzle" affect is achieved when four blocks with one common color come together at center point to form a four-block unit. Top and bottom rows will have two-block units.



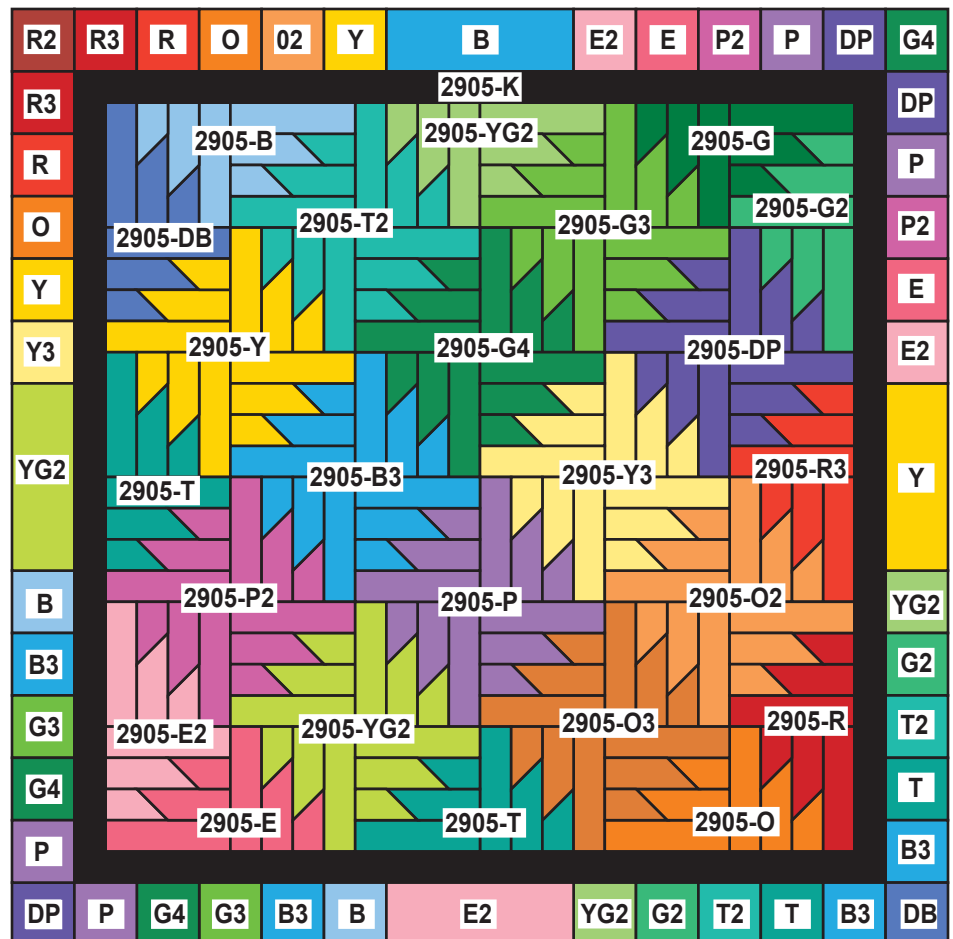
Borders:

Inner Border: Using 2905-K Black, sew 2" strips to both sides, and top and bottom of assembled blocks.

Outer Border: Referring to diagram, sew 3-1/2" squares and 3-1/2" x 9-1/2" rectangles into strips, and then sew these strips to both sides, top and bottom of quilt top.

Finishing:

Using 2905-LN Beige for backing, layer the quilt top with batting and and backing. Quilt as desired. Bind the edges with 2905-DB Dark Blue.



462 7th Ave
New York, NY 10018
(800) 223-5678
www.andoverfabrics.com

Kazoo Strings

Fabric designed by Gail Kessler



makower uk®



2905-B



2905-B3



2905-DB



2905-T



2905-T2



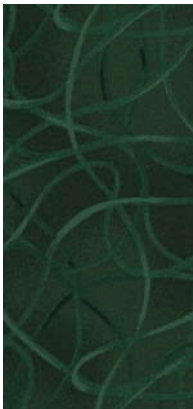
2905-YG2



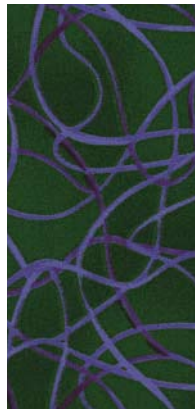
2905-G3



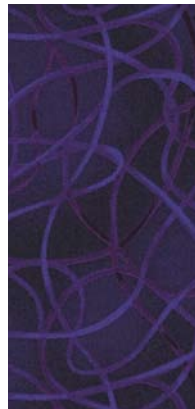
2905-G2



2905-G



2905-G4



2905-DP



2905-P2



2905-P



2905-K



2905-LN



2905-Y3



2905-Y



2905-Y4



2905-Y5



2905-N



2905-O3



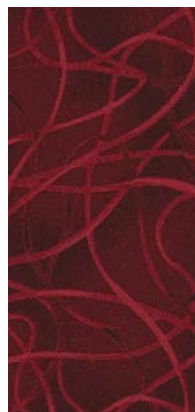
2905-O



2905-O2



2905-R3



2905-R2



2905-R



2905-E



2905-E2

Fabrics shown are 50% of actual size.

Free Pattern Download Available at
www.andoverfabrics.com